



# Internet2 Fall Member Meeting

## November 3, 2010

Research and Education Networks:  
Building Communities

# Community expansion

- Higher Ed / Research roots
- K-12, CC, others were welcome but not encouraged
- c2005 Governance model driven by higher ed and it's needs
  - BoD, NCREN Advisory Committee dominated by higher ed

# School Connectivity Program

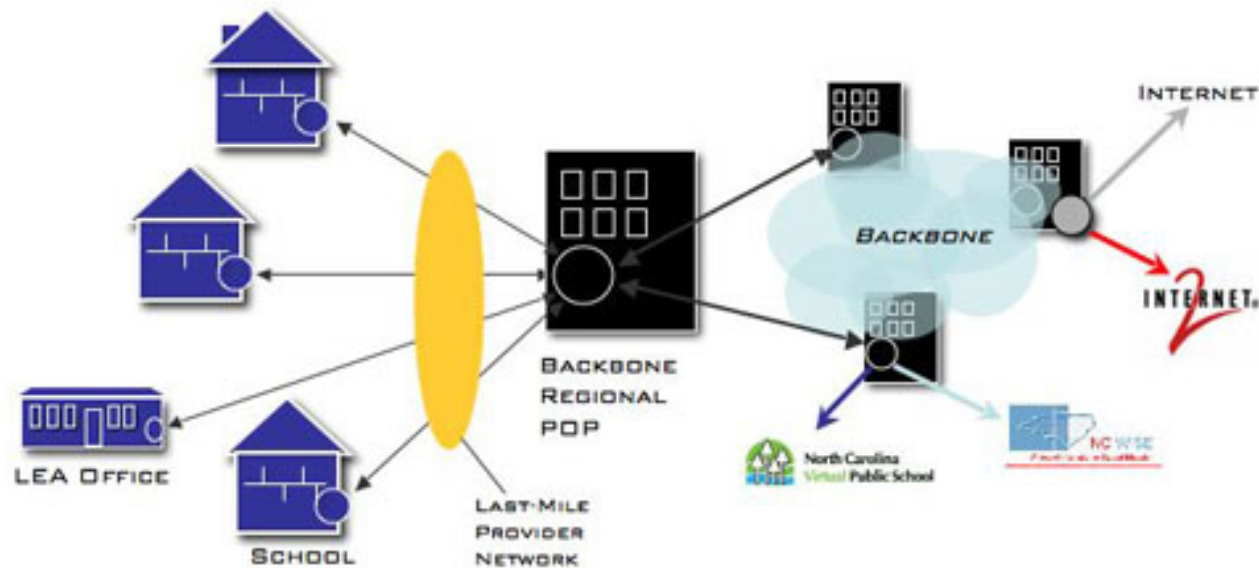
The School Connectivity Program is the culmination of several years of vision surrounding the 21st century classroom, and developing a North Carolina workforce poised to meet the challenge of a global economy. In 2006, year the e-NC Authority presented their "*Developing Regional Networks*" report to the General Assembly recommending the expansion of the North Carolina Research Education Network (NCREN) to the K-12 community. As a result in the 2006 session, the General Assembly passed Senate Bill 1741 allocating \$6M non-recurring to expand the number of schools with broadband, selectively build out networks to rural and under performing schools, and develop a scalable model for statewide implementation. Since the funding is non-recurring, projects were selected that have the greatest impact on student achievement and highlight practices that will serve as the model for a sustained and funded program.

## The report recommends specific actions including:

1. Provide a common network backbone
2. Establish the NC Education Network
3. Plan a 3-year Implementation Timeline

# Basic model for connectivity

## NC EdNET



# Report developed through extensive collaboration

- From this collaboration came a few themes
  - It would be critical to integrate K12 into the NCREN culture
  - K12 needed some additional services
  - MCNC Governance would need to be tweaked

# Path to inclusion / integration:

- Institutionalize communication paths between BoD, advisory groups
- Recast NCREN-advisory Committee as NSOC
  - Each institution served could appoint member
  - Tactical / Operational in nature
  - Concept of Working groups (have a work product) and Affinity groups (have a common interest) established
- Chair of NSOC sits on MCNC Advisory Committee (MAC)
  - MAC is strategic in nature
  - Chair has non-voting seat on board
- Open board seat filled with K12-savvy member (NOTE: e-rate challenge here)

# Concerns

- Sheer number of K12 districts will overwhelm advisory process
- Research focus will be lost
- K12 service requirements will fundamentally change MCNC culture

Reality: Difficult to fully engage K12 community



# Incorporating Community Colleges

- Insert CC reps into advisory structure
- Identify unique CC service requirements

Reality: CC culture a little closer to universities

# Incorporating Healthcare

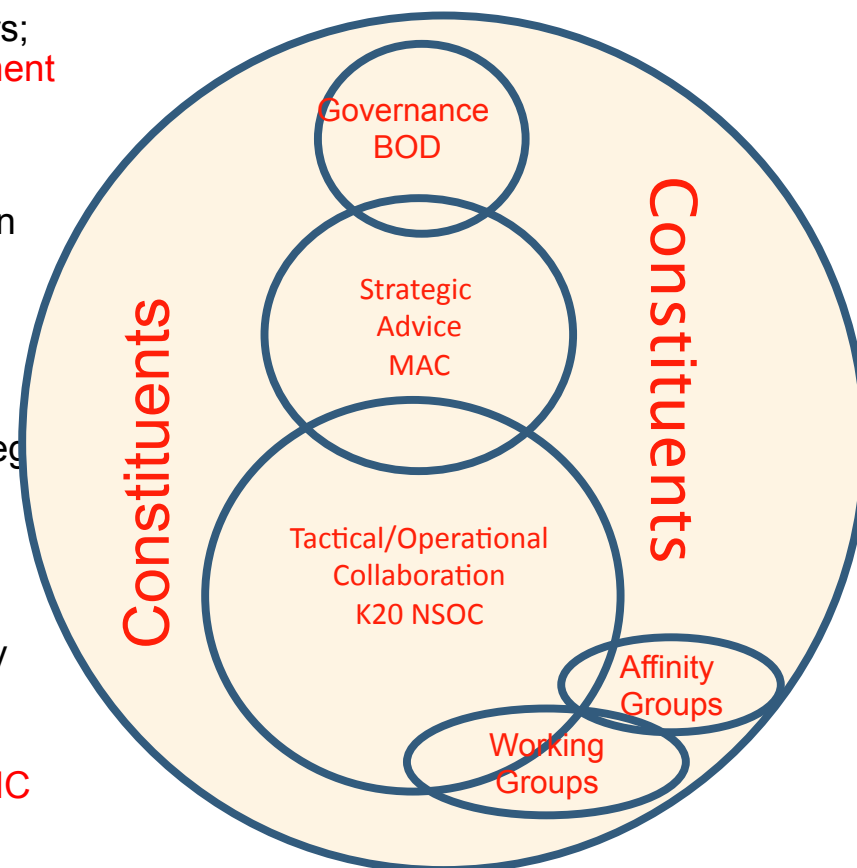
- RHCPP
  - 4 proposals - \$12M in grants
  - Combined into single effort
  - 2 RFPs – Public Health, Hospitals
- Very early stage now – no governance tweaks, minimal engagement

# Current position

- CC and K12 oriented BoD members
- Revised advisory structure with participation opportunities for CC and K12
- Struggling to:
  - get engagement at the level we are used to with Universities
  - Maintain university engagement
- Need to figure out what to do with healthcare

# Advisory Structure “snowman”

- MCNC Governance by the MCNC Board of Directors; primarily business leaders in the education, investment and technology arenas
- Strategic advice by the MCNC Advisory Council (MAC); primarily technology leaders in the education environment.
  - Understand the technical needs of the community
  - Brief and advise the Board of Directors on status, opportunities and issues that are strategic in nature
  - Main conduit to research needs
- Tactical/Operational collaboration with the K20 Networked Services Operating Committee; primarily technology managers in the education environment
  - Provide operational input related to NCREN operations and services to the MAC and MCNC on tactical decisions.
- Working groups and affinity groups; open to all constituents
  - Provide input and deliverables on specific topics to the NSOC
  - Leverage SME of the community



K12, University, and Community College constituencies are represented and have input at each level of the advisory structure

## Lessons:

- Don't worry about being overwhelmed. It will be hard to engage new groups in the manner we are used to
- Important to provide structure to communications pathways