

## K20 Initiative

[www.internet2.edu/k20](http://www.internet2.edu/k20)

### CONNECTIONS BY THE NUMBERS

60151 K–12 Schools

3505 Libraries

775 Colleges and Universities

648 Community or Vocational Colleges

234 Health Care Organizations

78 Museums

27 Science Centers

32 Public Radio, TV or Streaming Media

12 Performing Arts Organizations

14 Zoos, Aquariums, Parks and Reserves

**66575 Total connected**  
as of 22 Jun 2011

**59%** Percent of K–12 schools in SEGP states are connected so far

Check [k20.internet2.edu/connectivity](http://k20.internet2.edu/connectivity) for all the latest details!

Just because you go to a little school on the prairie, that doesn't mean you can't take a class trip to the Manhattan School of Music, or go on a deep sea diving expedition, or schedule some time on the electron microscope at Lehigh University—and still get back home by suppertime. With a little help from Internet2's **K20 Initiative**, students of any age can take a virtual bus to practically anyplace their imaginations can dream up.

### Closing the digital divide

Bringing together Internet2's world class network and membership with innovators from colleges and universities, primary and secondary schools, libraries, museums and other educational institutions, the K20 Initiative extends new technologies, applications and rich educational content to *everyone*—no matter where they're located. K20 participants can:

**Access rich media libraries** – Super fast connections bring unique, engaging content as close as a click—such as the growing number of streaming media programs offered by the ResearchChannel consortium.

**Use sophisticated scientific instruments remotely in real time** – Electron microscopes, radio telescopes and vast networks of undersea sensors—like those used in the Neptune project—are no longer reserved for researchers with doctorate degrees. K20 participants around the country can visualize and manipulate real-time data from NASA satellites overhead or NOAA instruments on the ocean floor.

**Experience virtual classes and journeys of discovery** – High speed, high definition videoconferencing expands the curriculum for schools with limited staff, delivers in-service education to those who can't travel to get it and

exposes explorers of all ages to exotic worlds they could never otherwise touch.

**Interact with the experts** – Write songs with a New York musician, observe doctors in an operating room, ask an oceanographer if he's afraid of sharks, learn Mandarin Chinese from a native speaker, or hold a live forum with your Congressional Representative in far away Washington D.C.

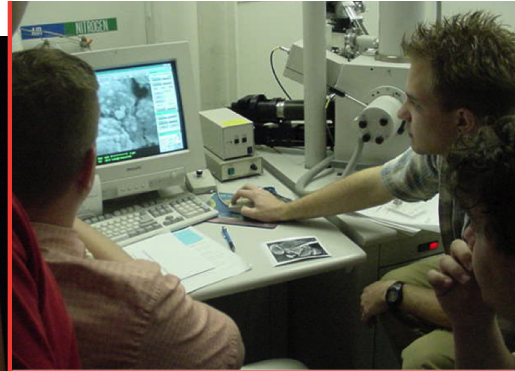
**Share ideas and friendship all around the world** – Connect with fellow learners around the globe, hold an international conference without a travel budget, share favorite songs in different languages, or trade ideas with a third grade class on how to build a monster.



### Muse with us

How can *you* get involved? Go to [k20.internet2.edu](http://k20.internet2.edu) and sign up! **Muse** is a social networking site created especially for the Internet2 K20 community. Create an online profile and:

- Meet our educators and innovators for yourself. Put them on your friends list and track their interests and projects.
- Browse our organizations directory or search



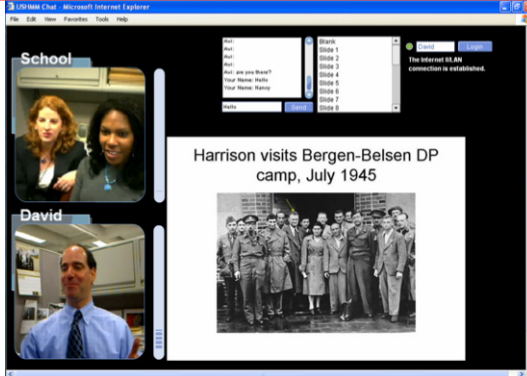
◀ The Center for Advanced Materials and Nanotechnology (CAMN) at Lehigh University offers students real-time remote access to their XL30 ESEM (environmental scanning electron microscope). To achieve acceptable scan rates requires the high level of performance that Internet2 provides.



◀ The United States Holocaust Memorial Museum is developing a distance learning course on how to teach about the Holocaust, using Internet2 to enable multipoint videoconferencing capabilities.

▲ K12 schools—as one of North Dakota's SEGP's—use their state network and Internet2 to collaborate with foreign language classes across the country.

During Somerset, KY's Convergence Conference, artist Daniel Dutton paints outstretched hands while Internet2 videoconferencing technology delivers live images from the Cleveland Museum of Art, a jazz trio from the Manhattan School of Music and another painter in Philadelphia.



## FOR MORE INFORMATION

.....

James Werle, Director,  
K20 Initiative  
[jwerle@internet2.edu](mailto:jwerle@internet2.edu)

Muse, a social networking project of the K20 Initiative at [k20.internet2.edu](http://k20.internet2.edu)

The K20 Internet2 community page at [internet2.edu/k20](http://internet2.edu/k20)

our live connectivity map to see if yours—or similar groups—are already connected.

- Start sharing your own projects and ideas!

### Extending access through sponsorship

Through sponsorship by higher education members, the **Sponsored Education Group Participants** (SEGP) program extends Internet2 access to state and regional education networks: community or vocational colleges, schools, museums, libraries, hospitals or other institutions that require routine collaboration with Internet2 members or their sponsored participants. Collaboration can take the form of instruction, clinical or research projects, or delivery of informational content or services. Since 2001, the SEGP program has connected 41 state education networks.

The **National K20 Initiative Advisory Committee** shapes, guides and inspires the initiative by identifying and engaging innovators

in K20 projects; bringing forward projects for multi-state participation; encouraging SEGP participation in Internet2 working groups; and facilitating communication between local, regional and state efforts and initiative leaders.

### Enabling tomorrow's discoveries

K20 helps Internet2 reach its goals for rapid technology creation, dissemination and evolution. Internet2 members believe big payoffs come from getting tomorrow's technologies into the hands of as many innovators and educators as quickly as possible. As one initiative leader put it, "the killer application here is the network itself—the people network and the physical network, and the opportunities they enable."

The local, isolated schoolhouse of yesterday is being replaced by a global, accessible one that opens the whole wide world to students of all ages. In very real ways, the K20 Initiative is bringing the global schoolhouse to a street address near you.